



Operative|Experience

# EMERGENCY AND TACTICAL MEDICAL CARE SIMULATION

All products also available online at [3bscientific.com](http://3bscientific.com)



# TACTICAL MEDICAL CARE TRAINING

## Tactical Hemorrhage Control Training Manikin

Full-body, remotely-activated simulator designed for point-of-injury, tactical medicine training for law enforcement and first responders. Ultra-realistic and fully mobile, it is ideally suited for training rapid assessment and treatment of trauma injuries in disaster drill and active shooter simulation scenarios.

The Tactical Hemorrhage Control Training Manikin is delivered with:

- 3,8 l concentrated artificial blood (antimicrobial antifungal, antifreeze)
- 2 rechargeable batteries and chargers
- 2 wireless remote controls
- 10 I.O. humeral and 10 I.O. sternal replacement parts
- 2 neck band replacement parts
- Rugged carry case

1021644



### Features:

- + Rapid Assessment for Tactical Casualty Care
- + Airway Management Training
- + Hemorrhage Control and Tourniquet Application Training



All specifications and product videos online at [3bscientific.com](http://3bscientific.com)

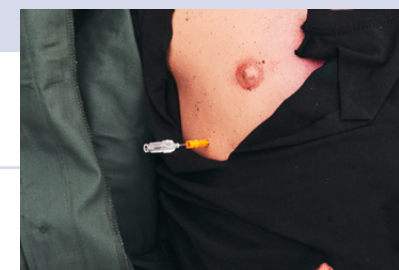


Operative Experience

➤ REALISTIC AND STURDY POINT OF INJURY TRAINING MANIKIN FOR TACTICAL EMERGENCY AND COMBAT CASUALTY CARE SIMULATION.



Standard and junctional tourniquet, use any tourniquet for application training



Needle decompression. midaxillary and midclavicular

## ➤ A SUPER-REALISTIC POINT OF INJURY CASUALTY CARE SIMULATOR FOR TCCC TRAINING

### Full body manikin with combat wounds to enhance TCCC training

The TCCS offers military, government forces, medical rescue, and private security a realistic way for combat trauma care training:

- Traumatic battlefield wounds
- Hemorrhage management
- Airway management
- Trauma management of breathing and circulation

TCCC training can get rough. Therefore, this trauma simulator was built to last under the toughest training scenarios:

- Full-body simulator, realistic size and weight (1.93 m and 84 kg) with fully articulating limbs for high threat extraction training
- Simple to operate, fully mobile and remotely controlled for realistic TCCC field training scenarios
- Easy-to-use instructor interface tablet with simulation logs and self-diagnosis
- Remote controlled (up to 48 m): respiratory and heart rate, pneumothorax activation, pulsating bleeding and arterial hemorrhage with 3 liter blood reservoir

**TCCS 1 with Gunshot Wounds**  
**1021380**

**TCCS 2 with Major Vascular Injuries**  
**1021381**

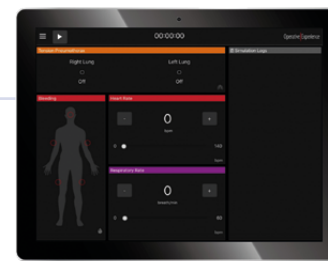
**TCCS 3 with Traumatic Amputation Injuries**  
**1021382**

**TCCS 4 with Multiple Traumatic Gunshot Wound and Amputation Injuries**  
**1021383**

**TCCS 5 with Abdominal Wounds with Evisceration**  
**1021384**



Available in different wound configurations, see [3bscientific.com](http://3bscientific.com) for all specifications and to request a demo.



Remotely controlled for realistic in-the-field scenarios, up to 48 m distance

## ➤ STANDARD TCCC TRAINING FEATURES:

Hemorrhage Management	Airway Management	Breathing and Circulation
Bleeding control via elevation, pressure points and kneedropping method	Insertion of nasal & oral pharyngeal airways	Bilateral and independent chest excursion
Apply tourniquets to control massive hemorrhage (CAT, junctional)	Advanced foreign body removal	Midclavicular and midaxillary needle decompression for tension pneumothorax
Effective drop knee technique	Suction of the airway	Humeral and sternal intraosseous infusion
Multiple and independent bleeding sites	Perform intubation (King LT and I-Gel)	Respiratory distress
Through and through wounds	External ventilation (Bag Valve Mask)	Carotid and radial pulses
Wound packing for severely bleeding wounds	Cricothyrotomy	—





# iSIMULATE

## Patient Simulation and Mobile Debriefing

Debriefing is one of the most relevant parts of medical simulation training. REALiTi is a smart and highly advanced patient monitor simulator that mimics proprietary monitors and defibrillators.

## CTGi – Fetal Heart Rate Monitor Simulator

CTGi is an economical, highly advanced and realistic fetal heart rate monitor simulation package. The lightness and simplicity, using just two iPads®, makes the CTGi ideal for in-situ training.



## Features of the CTGi Fetal Heart Rate Simulator:

- Realistic function & detail – CTGi allows you to create realistic traces with exceptional detail. Manage maternal vitals, easily add decelerations, accelerations as well as contractions. Pause, rewind and fast forward with a swipe
- Versatile – CTGi can be used in many different teaching modalities, its interface is incredibly realistic with an interactive control iPad® to create traces easily
- Capability – Turn a low fidelity situation into high fidelity simulation. Name, save and replay scenarios and traces for teaching

**1022818**

## > YOUR CUSTOMIZED SIMULATION SOLUTION!

Please work with our configuration assistance to pick and choose your simulation packages, software features, and hardware.

## REALiTi Highly Advanced Patient Simulator

REALiTi is a modular simulation ecosystem incorporating a patient simulator, CPR feedback and video in a single system. Starting with 2 iPad® tablets, REALiTi is a highly advanced patient monitor simulator which mimics proprietary monitors and defibrillators. By adding more modules, a complete in-situ simulator with live video streaming, CPR feedback and simulated patient records can be created.

## Main Features of REALiTi:

- Mimics real defibrillators and monitors – looks, sounds and functions like the real thing
- Defibrillator screens from Zoll, Corpuls, Philips and many more are included
- Advanced ECG and 12-lead settings
- OSCE & log function
- Ability to build custom scenarios
- REALiTi Community

- Unlimited possibilities of waveform combinations (add ectopics, arrhythmias and artifacts to any ECG waveform can be added by the user)
- Realtime feedback with CPR module
- CPR module can be deployed and used in 3 different ways
- Meets AHA requirements
- CPR report for review
- Integrated wireless video with REALiTi Camera for detailed debriefing
- REALiTi Chart has a complete library of resources to create simulated electronic patient records

**1022862 REALiTi Go**  
**1022815 REALiTi Plus**  
**1022816 REALiTi Pro**

**Contact us for more information**





# RESCUE

## Rescue Randy - Adult Manikin

Fully articulated for positioning in widely diversified training environments, made of tough cast vinyl with zinc-plated steel frame for longevity and rugged use.  
1.67 m tall, 74 kg  
**1005703**



## Rescue Randy 9000

Adult rescue manikin made from rugged polyethylene parts that allow for the addition of varying amounts of weight to each of the pieces (water or sand).  
1.83 m tall, 30 - 113 kg  
**1017945**



## Flexible Rescue Randy

For training of confined space rescue scenarios. The waist and head are flexible allowing a wide range of movements. This allows positioning under dashboards and in other extremely tight spots.  
1.65 m tall, 27 kg  
**1017944**



## I.A.F.F. Rescue Randy

Strengthened for Extrication Training. Fully articulated for positioning in widely diversified training environments. Weight distribution according to human weight distribution chart.  
1.83 m tall, 84 kg  
**1019955**



## Pediatric Water Rescue Manikins:

Excellent top and bottom water rescue device:  
+ Will sink to the bottom when filled with water  
+ Have articulating joints  
+ Made of durable plastic and rust-resistant steel

## Child Water Rescue Manikin

3 years old, 9 kg  
**1005739**

## Infant Water Rescue Manikin

6 - 9 months old, 5.5 kg  
**1018327**

## Newborn Water Rescue Manikin

3.2 kg  
**1005699**



## CasPeR The CPR Dog

Dog manikin can be used for emergency training with CPR: proper hand placement for compressions, depth of compressions, airway maintenance, femoral pulse check, and adequate ventilation. Airways are changed quickly and without tools.  
**1020264**



> Moulage Sets with pre-configured wound patterns save a lot of time during training preparations. More wound patterns online at [3bscientific.com](http://3bscientific.com)

## Weapons of Mass Destruction Moulage Kit

Improve medical care training for wounds from Weapons of Mass Destruction or Chemical-Biological-Radiological-Nuclear Explosive attacks.  
**1021949**

## Emergency Medical Treatment (EMT) Moulage

Wounds can be applied to human and manikin patients for pre-hospital emergency medical care simulation.  
**1005711**



More adult and juvenile manikins with different sizes and weights available at [3bscientific.com](http://3bscientific.com)

# BASIC LIFE SUPPORT

> NEW!

**Quality CPR Training Manikin CPRLilly PRO+** monitors up to 10 trainees at a time and complies with new AHA's 2019 requirements for direct feedback.



## Quality CPR Feedback:

- + Compression depth
- + Compression rate
- + Chest release
- + Jaw thrust and head tilt control
- + Hand placement
- + Compression fraction



FREE APP AVAILABLE!



## Key Training Features:

- Constant analysis of CPR parameters up to 10 manikins simultaneously
- Quality CPR feedback with debriefing history
- Ventilation with face shield, pocket mask and BVM
- Control of proper airway desobstruction
- AED pads placement training capable
- Simplified student feedback with the CPRLilly App

**Manikin with Tablet 1022071**

**Manikin without Tablet 1022237**



**Monitor up to 10 manikins at a time**



**Instructor debriefs trainee about CPR performance**

# AIRWAY MANAGEMENT

## AirSim® Advance X

The AirSim® Advanced Model features the uniquely constructed AirSim airway designed to provide true, anatomically correct and visually accurate internal features. The addition of a "real-feel" skin covering provides a more realistic bag mask ventilation training experience.

**1015527**



## Features:

- + Improved neck design allowing for accurate articulation
- + Anatomically accurate nasal passage
- + Inflatable tongue to increase difficulty of airway
- + Option to include "breakout teeth" to simulate the effects of bad practice in laryngoscopy



At **3bscientific.com** you will find a wide range of airway management and CPR trainers for newborn, pediatric, and adult patients.

## Adult Airway Management Trainer

The detailed anatomy provides a clear picture for intubation training: sculpted alveolar sac, bronchial tree, blood vessel structures of the cross-sectioned and exposed flexible lungs, interior main bronchus and oral/nasal pharyngeal spaces. Combine these with an airway complicated by breakout teeth, tongue edema, and laryngospasm, and this airway trainer really stands out. The stomach swells with oesophageal intubation, or excessive pressure with the BVM during rescue breathing. It also has the capability of vomiting.

**1005774**



> NEW!

## AirSim® Child Combo Bronchi X

- Wraparound replaceable neck skin rotates for up to 20 incisions
- Easy identification of sternal notch, tracheal rings and cricoid and laryngeal cartilages
- Inflatable tongue with life-like texture can simulate edema
- Replaceable lung bags inflate with successful ventilation
- Optional subcutaneous fat tissue demonstrates more difficult tracheostomy and cricothyroidotomy procedures

**1021903**



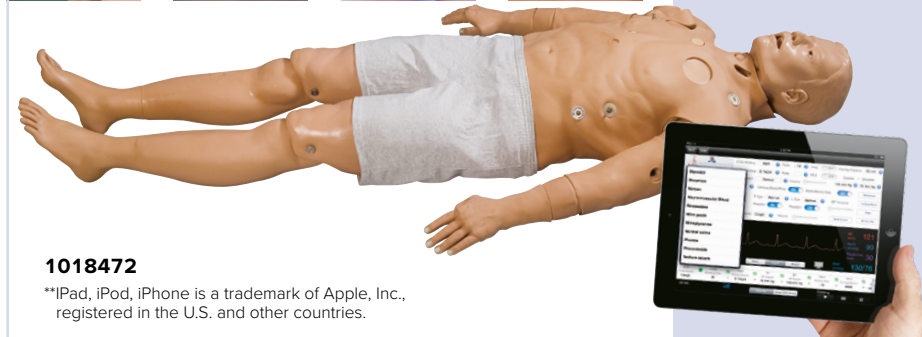
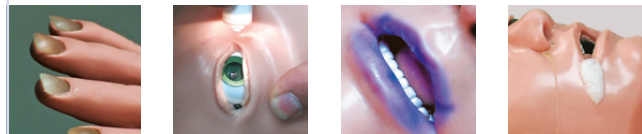


# ADVANCED TRAUMA LIFE SUPPORT

## SMART STAT Basic with iPad\*\*

This high-end patient simulator takes ALS training into the student's environment. Instructors can evaluate student knowledge, skill levels, and critical thinking abilities by utilizing the applications via the included iPad\*\*. Responsive controls and dynamic scenarios are easy to manage with PDF formatted reports.

This simulator can function in the lab and in the field for ascertaining diagnostic ability. Student performance records can be transferred to a computer, and chronological scenario event logs can be printed. SMART STAT has an on-board air compressor, includes a free app, and storage for students' performances.



1018472

\*\*iPad, iPod, iPhone is a trademark of Apple, Inc., registered in the U.S. and other countries.



### Key training features:

- + Advanced airway management
- + ECG
- + Pacing emergent lung sounds (anterior and posterior)
- + Emergent heart sounds
- + BP arm
- + Pulse points
- + Bilateral chest decompression and tube insertion
- + Virtual capnography and oximetry



## AUSCULTATION

### > NEW!

### The Bionic Hybrid Auscultation Simulator

When worn, the suit simulates physiological conditions to test diagnostic and procedural skills.

1021981



### Features:

- + Controlled wirelessly
- + Real time feedback to diagnosis and treatment
- + Features 5-wire ECG connections (pulse points, auscultation capabilities etc.)
- + Reusable and washable (30°C)
- + Can be worn by a manikin
- + Available in different sizes



### > NEW!

### SAM 3G® Student Auscultation Manikin

Using SAM 3G® teaching and learning auscultation becomes even more versatile and economic. Delivered with a portable SAM 3G® male auscultation torso, a DELL laptop with pre-installed software, a digital copy of SAM's Lesson Guide, a stethoscope and user's manual.

Free access to SAM Online for one year with each SAM 3G® purchase!

1021554



### Features:

- + Can be used with any stethoscope
- + Largest library of sound and videos for life-like simulation
- + Create and save own case videos
- + Lightweight and portable



More ATLS task trainers and manikins online at [3bscientific.com](http://3bscientific.com)



### Life/form® Pericardiocentesis Simulator

The Life/Form Pericardiocentesis Simulator is designed to teach the skills needed for this difficult procedure correctly. The simulator has a pressurized tension pneumothorax site and a site for the surgical placement of functional chest tube. Pericardiocentesis may be performed in the left subxiphoid space and in the left fifth intercostal space.

1018828

# INJECTION TRAINING

## 3B Scientific® Upper Leg I.M. Injection Trainer

Practice proper I.M. injection techniques. Strap it onto the upper leg. Operates on AA batteries.

- Both audio and visual feedback
- Use for training and performance evaluation
- Includes all important anatomical palpable landmarks
- Life-like silicone skin is extremely durable, can quickly be exchanged
- Robust and easy to clean

**1000511**



## 3B Scientific® I.M. Injection Pad

A simple intramuscular injection pad trainer that simulates muscle tissue.

- Injection made to a depth of 50 mm
- Life-like skin
- Absorbs fluid

**1005190**



## 3B Scientific® I.M. Injection Simulator

Compact I.M. trainer:

- Practice intramuscular injection with fluid up to a depth of 50 mm
- Quick-change skin pads that can be pierced multiple times
- Easy to clean and dry

**1010008**



# SUTURE TRAINING

## SMASH Advanced Patient Training Arm

Training possibilities:

- S.c. injection on volar forearm and lateral upper arm
- I.m. injection on upper arm
- Suture and incision on both upper arm and forearm
- Haemodialysis on the forearm
- IV and blood draw exercises, AV anastomosis, and placement of AV grafts
- Incision and suturing exercise on multi-layered inserts (skin, subcutaneous tissue, muscle, radial artery, and radial vein)
- Surgical & arterial & venous stick exercises
- Collapsed or bulging vessels simulated by varying vessel palpability

**1019645**

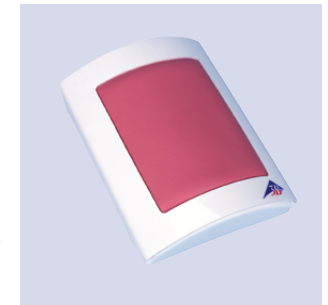


## 3B Scientific® Suture Training Arm

Movable fingers for suture training of challenging wounds between fingers:

- Skin and subcutaneous tissue differentiated for realistic suture experience
- Wounds can be inflicted by instructor anywhere on the training arm
- For surgical staples procedure

**1020904**

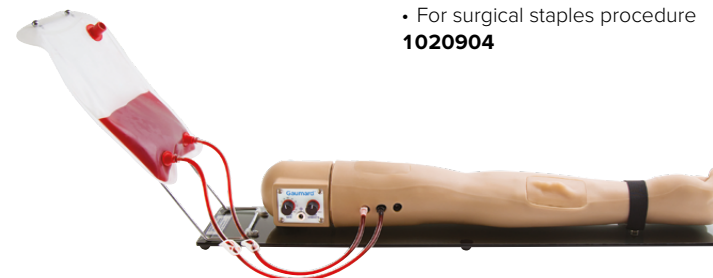


## 3B Scientific® Skin Suture Trainer

Another great low cost way to practice surgical opening and closing techniques.

- Economical reversible pad
- Designed to make complex incisions such as flap and dog turn suturing more realistic
- A sub-dermal layer is present to make secure intradermal sutures
- Base has suction feet to enable slip free use

**1005134**







Operative|Experience

## ► ULTRA-REALISTIC HEMORRHAGE CONTROL TRAINING MANIKIN.

Find all details about the Tactical Hemorrhage Control Training Manikin online at [3bscientific.com](http://3bscientific.com) and on page 3 in this booklet. Please contact us to schedule a demo session.

